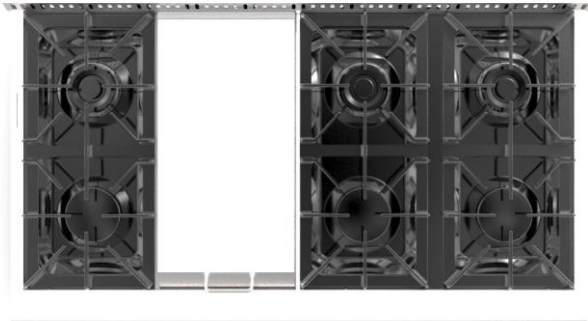
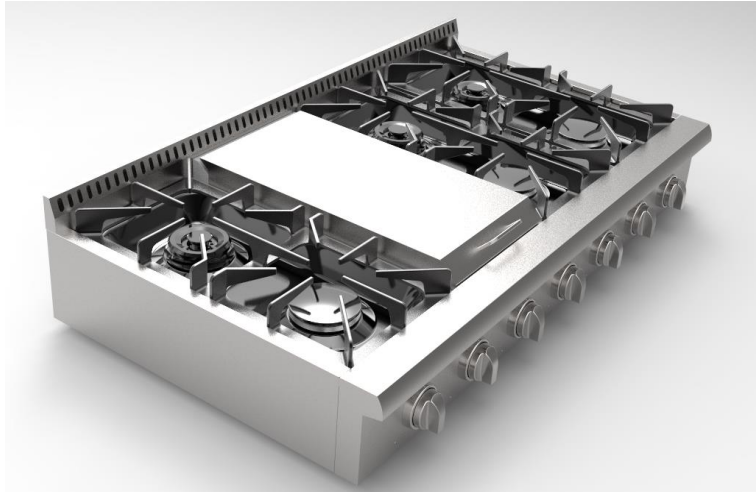


# HRT4806U - Thor 48 inch Professional Cooktop/Rangetop



## FEATURES

- Black Porcelain Drip Pan On Cook Top
- Heavy Duty Continuous Cast Iron Cooking Grates
- Automatic Re-Ignition Safety Feature
- Blue LED Control Panel Light
- Zinc Alloy Controller Knobs

## BURNER PERFORMANCE

Total Number of Range Top Burners	6 Burners
3 Front Burners (Single)	18,000 BTU
3 Rear Burners (Dual)	15,000 BTU
Stainless Steel Griddle	18,000 BTU

## TECHNICAL DETAILS

Fuel Type	Natural Gas / LP Convertible
Electrical Requirements	120V
Circuit Breaker (A)	15 or 20 A
Frequency (Hz)	60 Hz

## ACCESSORIES (NOT INCLUDED)

- Liquid propane Gas Conversion Kit

## WARRANTY

- 2 Year Warranty On Parts and Labor

## UPC CODE

6926697000311

## HRT4806U - DIMENSION & WEIGHT

### Product Dimension

Product width	47 7/8"
Product height (from bottom to top of back splash)	9 3/4"
Product height (from bottom to top of side panel)	7 3/8"
Product depth (from back panel to control board include gasket)	27 1/4"
Product depth (from back panel to side panel front include gasket)	24 3/4"
Depth of control panel (minimum)	1 3/4"
Depth of control panel (bullnose)	3"
Cast iron cooking grate (W x L)	10 5/8" x 22 5/8"
Adjustable legs	Recommend not to exceed 1/2"
Power plug length	56 1/4"

Required Cutout Size (W x D x H) (in)

48" x 24 3/4" x 7 3/8"-7 7/8"